

CANNON EQUIPMENT DAIRY SYSTEMS

25 FT. CART WASHER



Cart Washer Infeed



Cart Washer Exit

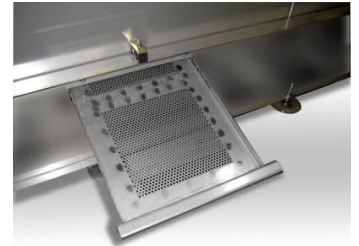
* Designed to wash either 80 gallon or 120 gallon Cannon Equipment Milk Bully carts

25 FT. CART WASHER SPECIFICATIONS

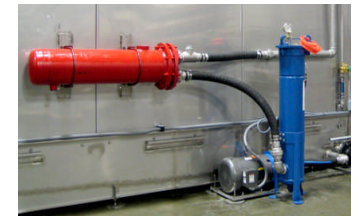
Cannon Equipment cart washers are a fully automated tunnel system that provides more consistent cleaning than a manual or semi-automatic method. With separate, wash and rinse stations, our washers are able to achieve a deep cleansing action that removes residue and other potential soils. The high capacity dual filter system includes coarse drop-in screens and reusable filter elements for trouble free operation and ease of maintenance.

GENERAL OPERATION

- Soak station spray bars with multiple spray nozzles – Soak station is used to loosen milk and other solids before the cart enters the wash station
- Wash station includes multiple spray bars with high flow nozzles for coverage of the cart shelves
- Wash water is re-circulated, screened, and filtered to 400 micron
- The rinse station has four spray bars, multiple rinse nozzles, rinse pump and supply tank
- Rinse water is also re-circulated, screened, and filtered to 400 micron
- Separate wash and rinse tanks minimize contamination of wash and rinse water
- Bag filter elements on both wash and rinse filter systems can be cleaned and reused for lower maintenance costs
- 140° wash water is recommended, with a mild chemical solution not to exceed a ph of 8
- Corrosion resistant attachment chain with stainless steel dogs provide smooth steady cart motion (hydraulic power unit not included)
- Variable speed hydraulic conveyor with an automatic start continuous chain is used for cart movement through the washer
- Wash can be operated in either automatic or manual mode
- Inline heat exchanger heats only the water being used



Pull-Out Filter drawer for easy maintenance



Heat Exchanger

GENERAL CONSTRUCTION

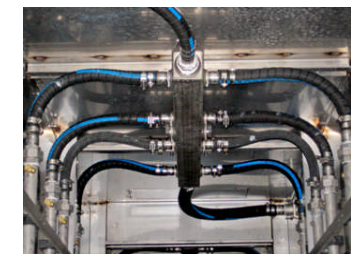
- Corrosion resistant stainless steel frame, wheel tracks, water tanks and housing construction
- Heavy duty 12 gauge housing
- Brass spray nozzles – easily removable for cleaning
- 4" drain ports included for cleaning and maintenance
- Steam heat exchanger for the wash water with npt threads for attachment of customer steam lines and controls
- Lift up wheel tracks for simplified cleaning of holding tanks
- Variable speed hydraulic conveyor with an automatic start continuous chain
- Corrosion resistant attachment chain with stainless steel dogs
- Allen-Bradley programmable controller
- Main enclosure, remote push-button station and junction boxes are non-metallic NEMA 4x rated



Cart Conveyor (shown with wheel tracks raised)

POWER REQUIREMENTS

- **Operating Speed:** Adjustable to 120 carts per hour
- **Electric:** 230/460 volt 3 phase, 50-25 amp 120 volt 1 phase 20 amp
- **Hydraulic:** 10gpm @ 800 psi constant pressure pump #8 sae ports
- **Pneumatic:** 8 scfm @ 100 psi
- **Steam:** Est. 800lb/hr startup (704,000 btu), 500lb/hr running (440,000 btu), 2" npt. inlet port
- **Water Make-Up:** Rinse – 1" npt. Wash 1" npt
- **Wash Tank:** 200 gallon capacity



Water Delivery System

OPTIONS

- Infeed and exit ramp

Please contact Cannon Equipment if it is your desire to use carts other than CannonCarts™

Materials and specifications are subject to change without notice



1-866-928-9116

www.CannonEquipment.com

15100 Business Parkway
Rosemount, MN 55068

324 Washington
Cannon Falls, MN 55009

950 Riverside Drive
Chattanooga, TN 37401